

EQUIP. TYPE R390A/HAR EXP. NO.

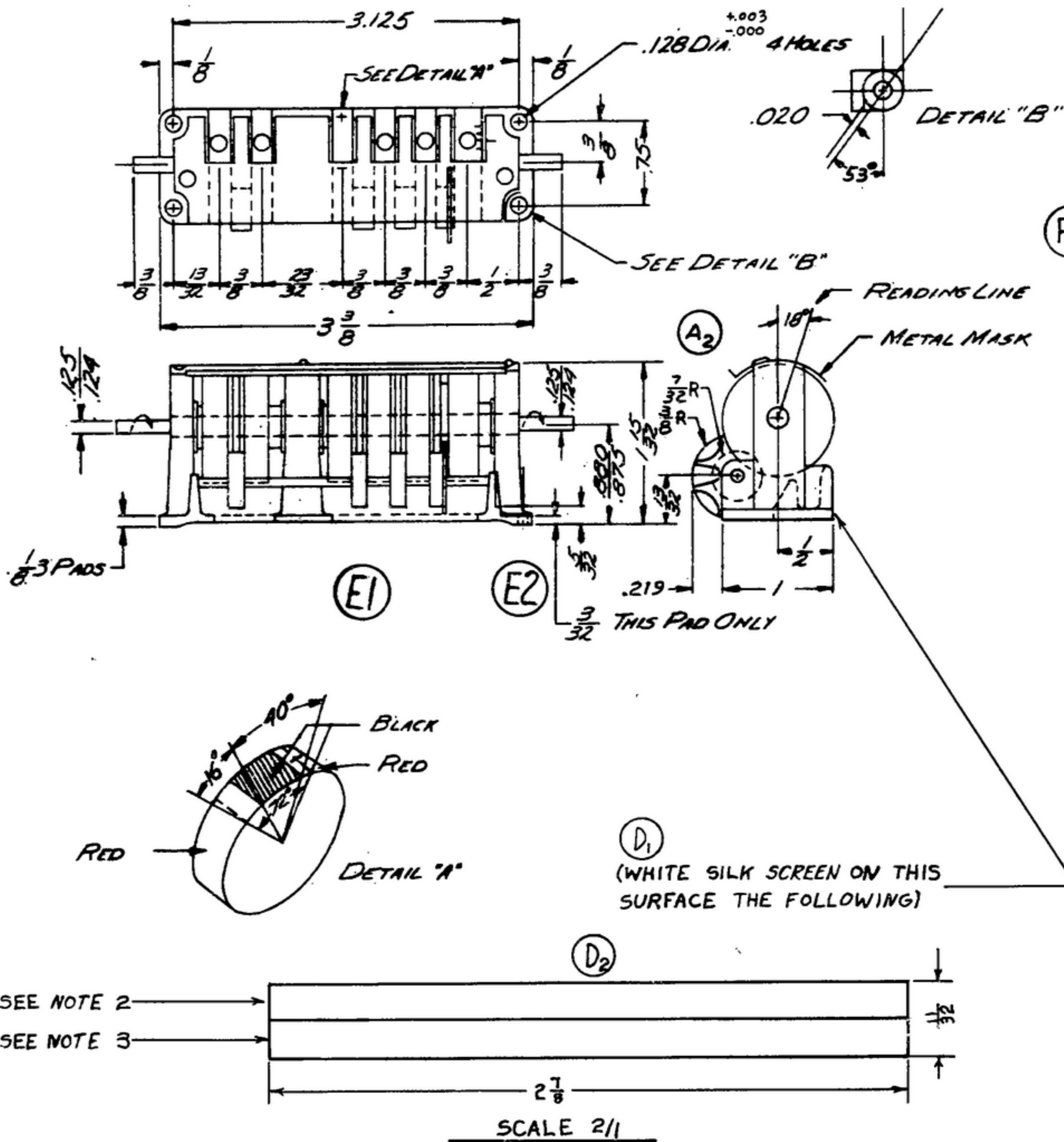
Doc. 015-0329-00

NOTICE: WHEN GOVERNMENT DRAWINGS, SPECIFICATIONS, OR OTHER DATA ARE USED FOR ANY PURPOSE OTHER THAN TO IDENTIFY THE SOURCE OF THE INFORMATION, THE UNITED STATES GOVERNMENT THEREBY INCURS NO RESPONSIBILITY FOR ANY OMISSIONS, ERRORS, OR FOR ANY INJURY OR DAMAGE TO PERSONS OR PROPERTY AS IN ANY MANNER LICENSING THE HOLDER OR ANY OTHER PERSON OR CORPORATION, OR CONFESSING ANY RIGHTS OR INFRINGING ON PATENT RIGHTS, OR SHALL ANY PATENTED INVENTION THAT MAY IN ANY WAY BE RELATED THERETO.

THIS DOCUMENT HAS BEEN PURCHASED BY THE GOVERNMENT AND MAY BE REPRODUCED AND USED IN CONNECTION WITH ANY GOVERNMENT PROCUREMENT OR MAINTENANCE OPERATION.

* FOR INFORMATION ONLY. CONTRACTOR MAY AT HIS OPTION DEViate FROM THESE PROCESS DETAILS.

SWE APPROVAL		REVISIONS			
SYM	FR	SYM	DESCRIPTION	DATE	APPROVAL
	PR10042-4	A ₁	A1-ADDED ALL UNPAINTED FINISHES TO BE TYPE II EXPOSURE PER MIL-F-14072 A2-CORRECTED END VIEW. A3-ADDED APPL. SM-D-343600.	8 OCT. 59	42428-PC-59 REV'D. PME
	CA 84682	B ₂	B ₁ - WAS AX-75818-4 B ₂ -ADDED MARKING NOTE & MASK COLOR NOTE.	23 FEB. 60	42428-PC-59 REV'D. PME
	CA 85054	C	(1)-MARKING NOTE: CODE NO. WAS 28738	2 FEB. 61	42428-PC-59 REV'D. PME
		D ₅	D ₁ -ADDED SILKSCREEN NOTE; D ₂ -ADDED VIEW; D ₃ -DELETED MASKING & MARKING NOTES; D ₄ -ADDED NOTES 2, 3 & 4; D ₅ -CHANGED PART NO.	20 JUL 62	EDBL REV'D. PME
		E	(1) .040 & 21/32 DINS. DELETED. (2) .219 WAS 7/32.	28 FEB. 60	JLC JM R.P.
		F	(1) NOTE 1 DESCRIPTION PARA. REV, NOTE 5 ADDED.	29 JAN. 68	P.H. R.P. R.P. EDB



(F1) NOTES:

1. PART MAY BE NO. AX-75818 AS SUPPLIED BY VEEDER ROOT CO., HARTFORD, CONN., OR EQUAL, PROVIDING IT MEETS THE FOLLOWING REQUIREMENTS AND DIMENSIONS SHOWN.
DESCRIPTION: 6 FIGURE, NON-RESETTING REVERSIBLE MECHANICAL COUNTER WITH MASK.
COUNTS PER REVOLUTION: RIGHT SHAFT - 10; LEFT SHAFT - 10.
MAXIMUM SHAFT SPEED: RIGHT SHAFT - 1400 RPM; LEFT SHAFT - 100 RPM.
DIRECTION OF ROTATION: RIGHT SHAFT - COUNTERCLOCKWISE WITH INCREASING COUNT.
 LEFT SHAFT - CLOCKWISE WITH INCREASING COUNT.
 COUNTER SHALL BE CAPABLE OF 2.5 MILLION REVOLUTIONS IN EACH DIRECTION (TOTAL OF 5 MILLION REVOLUTIONS) WHEN OPERATED AT A CONTINUOUS SPEED OF 1400 RPM, WITHOUT EXCESSIVE WEAR OR MALFUNCTION (JAMMING, DISENGAGEMENT, CHATTER, ETC.).

FRAME: ALUMINUM ALLOY

FINISH: ALL SURFACES TO BE PAINTED SHALL BE PROPERLY CLEANED, CONDITIONED, AND PRIMED PRIOR TO THE FINAL PAINT COATINGS, AS SPECIFIED IN SPEC MIL-F-14072. ALL UNPAINTED FINISHES TO BE FOR TYPE II EXPOSURE PER MIL-F-14072.

CHARACTERS:

NUMERALS: WHITE DIGITS ON BLACK BACKGROUND.
PLUS AND MINUS SYMBOLS: WHITE SYMBOLS ON RED BACKGROUND.
LUBRICATION: POROUS BRONZE BEARINGS SHALL BE IMPREGNATED BY MANUFACTURER, WITH DOW-CORNING DC-200 SILICON BASE OIL, 20 CENTISTOKE AS SUPPLIED BY DOW-CORNING CORP., CHICAGO, ILL., OR EQUAL. TRANSFER DRIVE TO BE LUBRICATED WITH GREASE PER SPEC MIL-G-7421 AS DEEMED NECESSARY BY MANUFACTURER.

DISSIMILAR METALS: SHALL NOT BE USED IN INTIMATE CONTACT UNLESS SUITABLY PROTECTED FROM ELECTROLYTIC CORROSION.

ALL WHEELS: SHALL BE SET AT ZERO PRIOR TO PACKAGING AND SHIPPING.

PRODUCTION SAMPLE TEST REQUIREMENTS:

SALT SPRAY: PART SHALL BE CAPABLE OF WITHSTANDING A 50 HOUR SALT SPRAY TEST AS SPECIFIED IN SPEC. QQ-M-151 WITHOUT SHOWING EVIDENCE OF HARMFUL CORROSION.

HUMIDITY: PART SHALL BE SUBJECTED TO FIVE (5) CYCLES OF HUMIDITY TEST AS SPECIFIED IN SC-B-13914. AFTER THE FINAL CYCLE HAS BEEN COMPLETED, THE PART SHALL PERFORM ITS FUNCTION SATISFACTORILY AND ALL FINISHES SHALL BE ACCEPTABLE.

VIBRATION: PART SHALL BE SUBJECTED TO SIMPLE HARMONIC MOTION HAVING AN AMPLITUDE OF 0.030 INCH (0.060 TOTAL EXCURSION) AND A FREQUENCY WHICH VARIES CONTINUOUSLY BETWEEN 10 AND 55 CYCLES PER SECOND, FOR A DURATION OF 30 MINUTES ALONG EACH OF THE PRINCIPAL AXES. PART SHALL SHOW NO PERMANENT DEFORMATION OR LOOSENING OF ANY COMPONENT PART.

REMARKS: END PLAY OF EITHER DRIVE SHAFT MUST NOT EXCEED .010". DRIVE SHAFTS MUST ROTATE FREELY WITHOUT BINDING WITH COUNTER POSITIONED IN ANY PLANE.

INSPECTION REQUIREMENTS: ALL UNITS SHALL BE INSPECTED FOR THE FOLLOWING:

- A-VISUAL FOR WORKMANSHIP AND FINISH.
- B-COUNTS PER REVOLUTION.
- C-DIRECTION OF ROTATION.
- D-END PLAY

- CURRENT MANUFACTURER'S NAME & PART NUMBER TO APPEAR HERE.
- COUNTER MANUFACTURER'S NAME & PART NUMBER TO APPEAR HERE.
- ALL MARKINGS TO BE 1/8 HIGH AND CONFORM TO MIL-M-13231.
- UNITS WHEEL, TENS WHEEL AND GENOVA-PINION OF HIGH SPEED BANK TO BE OF METALLIC CONSTRUCTION. GEAR ELEMENTS OF THESE PARTS TO BE CASE HARDENED.

COLLINE PART NO.	TYPE	REQD.	PART NO.	DESCRIPTION	MATL.	MATL. QTY.
LIST OF MATERIAL						

COLLINE NO.	QTY	NEXT ASSY	USED ON
558-0324-004	1	SM-D-28975	SC-DL-28775

APPLICATION

DRAWN HENRY CHECKED [Signature] APPROVED [Signature]	COLLINS RADIO CO. CEDAR RAPIDS, IOWA 14214 - PH 51-95 SIGNAL CORPS REVIEWED PME APPROVED HLY PME DATE 12 JAN 55	DEPARTMENT OF THE ARMY SIGNAL CORPS ENGINEERING LABORATORIES FORT MONMOUTH NEW JERSEY SM-C-249195
---	--	---